



*Promises for
Tomorrow*

2005 Annual Report



Shuswap Community Foundation

10 *Years Serving*
THE SHUSWAP



President's Report

OUR MISSION

- To provide a vehicle for residents of the Shuswap to enrich their community in perpetuity through the establishment of a variety of endowed funds;
- To disburse the earnings on the capital funds annually to build community capacity and to support charitable projects that will enrich the lives of residents;
- To honour and remember the Foundation's donors; and
- To assume a leadership role in community philanthropy.

PRESIDENT'S REPORT 2005

On behalf of Shuswap Community Foundation, it is my pleasure to present this report to you, the community we serve. The report provides particulars of the Foundation's activities for the year ended June 30, 2005. I hope that you enjoy reading it.

2005 marks the 10th anniversary of Shuswap Community Foundation. In January 1995, a small group of committed volunteers and interested citizens gathered in Salmon Arm to launch the Foundation. We shared the dream of building a large capital fund to provide support for the charitable sector throughout the Shuswap in perpetuity. At that time, the Foundation had less than \$1,000 in

its credit union account.

Although 10 years is an insignificant amount of time when contemplating perpetuity, it has been an excellent beginning for Shuswap Community Foundation. As of June 30, 2005, the permanent capital fund exceeded \$1.25 million with \$60,000 income available for distribution to the community.

The growth of the Foundation is a testament to the generosity of our donors. Thank-you! Without our donors, the Foundation would still be a dream.

Since the first grants totalling \$2,200 were made in 1996, the Foundation has returned nearly \$300,000 from earnings on the capital fund to support children, seniors, sports and recreation, arts and culture, heritage, health, education, social justice, the environment, and animal welfare. Just think what will be returned annually to the community in 10 or 20 years time, with continued support from our donors and a lot of hard work!

Thanks to the support of our corporate sponsors named on the back page of this report, the Foundation was again able to meet its annual operating expenses without charging an administration fee against the endowed funds. We believe that Shuswap Community Foundation offers a cost-effective option for individuals, families, corporations and not-for-profit organizations seeking to build a bright future for the community through the establishment of endowed funds.

I invite you to visit the Foundation's excellent website - www.shuswapfoundation.ca - to find out more. Or contact any of our directors. We are always happy to meet with individuals or groups to discuss the Foundation.

It is an honour to serve as president of the Foundation. One of the rewarding parts of the office is working with a great group of



Cindy Derkaz

committed, community minded individuals on the board and committees of the Foundation. They bring a wealth of expertise to their volunteer positions, as well as humour and good grace. Thanks to all of you for your co-operation and dedication.

The first decade may have passed but it was just the beginning. As we start our second decade, the future looks bright. I have no doubt that the Shuswap Community Foundation will be giving back to the community in perpetuity.

Cindy Derkaz, President



Board of Directors



Cindy Derkaz
832-8652
President



Lois Higgins
832-4034
Vice President
Chair, Crants Committee



Gary Brooke
832-9311
Past President



Clyde Tucker
832-8376
Secretary



Jim Scales
832-5594
Treasurer



Fred Busch
836-4318



Alice Duck
836-3298



Lyle Petch
832-7732



Ralph Segreto
832-1970
Chair, Investment Committee



Sheri Reynard
832-1382



Bruce Nyeste
675-4127



Marg Shand
832-9547



2005 Committee Reports

Treasurer's Report

STATEMENT OF FINANCIAL POSITION JUNE 30, 2005 (Unaudited - Prepared by Management)		
	2005	2004
ASSETS		
Current Assets		
Cash and bank - restricted	\$ 121,190	\$ 40,444
Cash and bank - unrestricted	6,130	21,370
Accrued interest receivable	12,528	11,887
	139,848	73,701
Long-Term Investments	1,248,901	1,122,343
	1,388,749	1,196,044
LIABILITIES AND NET ASSETS		
Liabilities		
Accounts payable	1,300	1,300
Funds held in trust	2,327	12,079
	3,627	13,379
Net Assets		
Net assets restricted for endowment purposes	1,380,292	1,162,595
Unrestricted net assets	4,830	20,070
	1,385,122	1,182,665
	\$1,388,749	\$1,196,044

STATEMENT OF OPERATIONS YEAR ENDED JUNE 30, 2005 (Unaudited - Prepared by Management)		
	2005	2004
Revenues		
Administration fees	\$ 2,250	\$ 1,800
Other revenue - unrestricted	6,850	3,250
Flow through grants (LEAD and YACOS)	13,000	5,000
Investment income	48,676	42,447
	70,776	52,497
Expense		
Annual Report	3,778	2,644
Advertising	500	294
Computer and internet	2,297	900
Seminar costs	725	-
Memberships	250	150
Office	729	2,028
Promotion and meetings	1,351	790
Flow through grants	5,000	10,000
Professional fees	3,831	1,712
Distribution from discretionary funds	23,575	17,000
Distribution from non-discretionary funds	24,521	21,328
	66,557	56,846
Excess of Revenues over Expense (Expense over Revenues)	\$ 4,219	\$(4,349)

The Shuswap Community Foundation is pleased to say that volunteers continue to manage the Foundation's affairs. We rely on our Administration Endowment Fund and the support of corporate sponsors to cover operating expenses. No fees are charged on any of the funds we administer, so all earnings are returned to the community.

What appears here is an accurate reporting of our balance sheet, and of 2004-05 activities. A comprehensive audited financial statement can be viewed or downloaded from our Publications page at www.shuswapfoundation.ca.



Jim Scales

Jim Scales, Treasurer



Investment Committee Report



Ralph Segreto

This past year has seen changes to the Foundation's investment committee, both in terms of its members and in a shift in investment strategy. Bonnie Threlkeld, a stalwart member of the committee, retired from the Foundation. We will miss her, but were fortunate indeed to find Sheri Reynard to replace Bonnie on the Board and on the Investment Committee. Sheri was formerly an investment advisor with Edward Jones. Also, John Beevor-Potts has agreed to serve on the Committee as a community volunteer.

We revisited our Investment Policy in 2004, and have made what we feel are prudent amendments. The challenge, as I lamented in last year's report, is to find conservative, stable investments that will continue to support our goal of a minimum 5% return. The options available to the Foundation in such a scenario, are to go out further on the yield curve, or to increase our equity component. We feel comfortable with our bond portfolio which contains terms up to 2017, and with our preferred shares, so rather than going long on bonds, we have chosen to add income trusts to our portfolio. We now own Yellow Pages, InterPipeline, Ricocan REIT and recently purchased Transalta Power Limited Partnership Units. Yields on these products range from 6.5% to 7.9% and all are rated ST-3 or higher. We will maintain our investment in Income Trusts as a limited portion of the equity component (which is a maximum of 25% of the portfolio). We have also defined preferred shares as an income product for our purposes. Preferred shares have more in common with bonds than with stocks, so including them in the bond portfolio rather than the equity (or common stock) portfolio realigned our investments into more appropriate areas.

On behalf of my colleagues on the Shuswap Community Foundation, we thank you for your trust and we commit to continue providing sound, ethical financial management of your funds.

Ralph Segreto, Chair, Investment Committee



Foundation Capital Fund

The 29 funds held by the Shuswap Community Foundation fall into 4 categories: Agency Funds, Dedicated Funds, Community (General) Funds & Field of Interest Funds. Earnings on Agency Funds & Dedicated Funds are disbursed annually to the agency which invested the fund with the Shuswap Foundation, or to the society specified by the donor.

Community (General) and Field of Interest

Funds are Discretionary Funds, and earnings are disbursed annually at the discretion of the Directors keeping in mind the interests and preferences of donors.

A critical element of the Shuswap Community Foundation's mandate is that it provides a vehicle through which people can benefit their community forever. Another element is that the Foundation honours and celebrates

its donors, and remembers loved ones and friends. Several "named" funds have been established with the Foundation by individuals, by families, and *In Memoriam*. Normally a named fund or a fund with a specific purpose must be at least \$10,000.00, although the Foundation will establish a named fund with \$1,000.00 if there is an expectation that it will continue to grow.

NOTE: Dollar figures below show gifts to the Foundation (i.e. "contributed capital") they do not reflect any accrued interest or retained earnings.

DEDICATED FUNDS

Agency Funds

	2005	2004
Salmon Arm College Scholarship Trust		
▪ Len O'Neill Memorial Fund	14,346	10,000
▪ Vicki Hitchen Memorial Fund	56,250	54,440
▪ Nancy & George Clark Memorial Fund	77,340	77,340
Okanagan College Foundation	100,000	100,000
School District 83	53,835	53,835
Shuswap Hospice Society	9,150	4,000
City of Salmon Arm Endowment Fund	38,758	30,780
Shuswap Art Gallery Association	71,746	56,350

Designated (Donor Directed) Funds

Marie Manson Memorial Art Award	21,102	21,052
Shuswap Area BCSPCA	16,838	16,838
▪ Al Neale		
▪ Peggy Kernaghan (In Memoriam)		
Al Neale Bursary	17,772	17,772
Walter Ellaschuk Memorial Bursary	25,000	25,000
Kin Scholarship Fund	32,000	32,000
Rita Smuin Memorial Bursary	10,100	10,100
Shuswap Lake Health Care Foundation	3,059	3,059
Peterson Family Endowment	15,600	15,000

Total Dedicated Funds **\$562,896** **\$527,566**

DISCRETIONARY FUNDS

Field of Interest Funds

	2005	2004
Wayne Williamson Memorial	3,242	3,242
Bill MacDonald Memorial	5,794	5,494
Administrative Endowment Fund	43,901	39,851
Enid Finn Memorial Fund	5,854	4,684
Seniors Project Fund	19,419	19,419
Jennifer Phillips Memorial	41,533	41,283
SASCU Youth Endowment Fund	13,000	9,000
General Youth Endowment Fund	10,650	8,650
Gertrude & Ludwig Klein Memorial	11,005	11,005
Mary Douhaniuk Memorial Fund	70,000	-

Community (General) Funds

General Fund	322,786	311,036
▪ General & Founders Fund		
▪ Estates of Nancy & George Clark		
▪ Estate of Catherine Shay		
▪ Dr. Tess Trueman Endowment Fund		
Askew Family Fund	42,435	2,435
Sicamous (Anonymous)	45,000	45,000
John & Ingrid Monk Endowment Fund	42,750	41,250
Wainwright-Mobley Memorial Fund	15,918	10,590

Total Discretionary Funds **\$693,287** **\$552,939**

Total Contributed Capital **\$1,256,183** **\$1,080,505**

A Sample of Foundation Grants



A grant to the Shuswap Association of Writers for free outdoor sessions at the International Writers' Festival held in Salmon Arm, June 2005 with some of the country's top writers and performers.



A grant to the Shuswap Search & Rescue Society allows training sessions like this tracking workshop held in October, 2004, at the Sunnybrae Bible Camp.



2005 Grants

Grants Made By Shuswap Community Foundation in 2005

DONEE	GRANT	PROJECT	FUND
Grants from Discretionary Funds			
Access Justice****	800	Legal access	Askew Family Fund, General Fund
Camp Grafton Society	2,500	Construction of underpass	General Fund
Eagle Valley Community Support Society	3,000	Elderly & disabled support structure	Sicamous (Anonymous), Seniors Project
Falkland Westwold First Responder Society	1,125	Cell phones	General Fund
North Shuswap Community Association***	1,656	Community hall electrical upgrade	General Fund
North Shuswap First Responders Society	1,620	Individual jump kit	General Fund
North Shuswap Historical Society	1,000	Preservation of historic photos	General Fund
Notch Hill Town Hall Association**	500	Curbs for parking lot at new renovation	General Fund
Rotary Club (Daybreak)*	3,000	Children's splash park	Wainwright-Mobley Memorial, General Fund
Salmon Arm Museum & Heritage Association	1,000	Space assessment and re-design	Askew Family Fund
Salmon Arm Partners in Community Leadership	2,500	Volunteer Development Program	General Fund
Shuswap Art Gallery Association	2,100	Children's Mosaic Project	Gertrude & Ludwig Klein Memorial, General Fund
Shuswap Family Resource & Referral Society	2,200	Baby food kitchens	Jennifer Phillips Memorial Fund
Shuswap Lake Accordion Festival**	500	2006 Accordion Festival	Enid Finn Memorial, General Fund
Shuswap Search & Rescue	3,000	Building feasibility study	John & Ingrid Monk Fund, General Fund
Shuswap Theatre Society	1,000	Sponsor 2005-06 season	General Fund
South Shuswap Canada Day Committee**	800	Canada Day Celebrations	General Fund
YOUTH ADVISORY COMMITTEE (YACOS) GRANTS			
Shuswap Skaters Association*	1,000	Kick-start fund raising project	SASCU Youth Endowment Fund
Air Cadet Squadron 222	1,000	Flight time for new (younger) cadets	General Youth Endowment Fund
LEAD GRANTS (In cooperation with the Vancouver Foundation)			
Shuswap Day Care Society	2,500	Literacy program at teen daycare	
Eagle Valley Community Support Society	2,500	Address structural issues	
Total from Discretionary Funds	\$30,501		
Grants from Dedicated Funds (Donor Directed & Agency Funds)			
Al Neale Bursary Fund	750	Awarded to Treva Diakow	Salmon Arm College Scholarship Trust
Kin Scholarship Fund	1,700	Awarded to Allyson Marshall	SD#83
Marie Manson Memorial Art Award	1,200	Awarded to Marissa Gomez & Aurian Haller	Marie Manson Art Award Trust
Peterson Family Endowment	787	Salmon Arm Museum & Heritage Association	
Rita Smuin Memorial Endowment	500	Award to Brady Scafe	SD#83
Shuswap BCSPCA	863	Fund est. by Al Neale & by donations in memory of Peggy Kernaghan	BCSPCA Edowment Fund
Shuswap Lake Healthcare Foundation	170	Fund est. by Joyce O'Neill	SLHC Endowment Fund
Walter Ellaschuk Memorial Bursary	1,300	Award to Tricia Schandelle & Korina Sauve	SD#83
City of Salmon Arm Endowment	1,809	Capitalise and retain in Fund	Building Endowment to fund annual grants
Okanagan College Foundation	5,191		OC Foundation Endowment Fund
Salmon Arm College Scholarship Fund	7,160	Len O'Neill, Vicki Hitchen, Nancy & George Clark Memorial Funds	Salmon Arm College Scholarship Trust
School District #83 Scholarship fund	2,700	Supported by contributions from Air Traffic Controllers Reunion (2003 & 2004)	SD#83 Endowment Fund
Shuswap Hospice Society Endowment	342		Shuswap Hospice Society Endowment
Shuswap Art Gallery Association Endowment	3,200		SAGA Endowment Fund
Total from Dedicated Funds	\$27,672		
TOTAL GRANTS FOR 2005	\$58,173		

* Projects sponsored by the City of Salmon Arm
 ** Projects sponsored by Shuswap Estates Community Association
 *** Projects sponsored by the North Shuswap Historical Society
 **** Project sponsored by NeighbourLink



Askew Family Fund



Lloyd & Dorothy Askew

On November 24, 2004, the Askew Family marked its 75th Anniversary of business in Salmon Arm and area. Truly, a cause for celebration!

And the Shuswap community will celebrate this generous local family for years to come. The Lloyd and Dorothy Askew Family Endowment Fund was established with the Shuswap Community Foundation. The family's gift of \$30,000 will be held in perpetuity and income from the fund will be disbursed annually at the discretion of Foundation Directors, who will award one or more grants to non-profit charitable organizations operating in the Shuswap.

"This is a true example of a family giving back to their community." Cindy Derkaz

Foundation president, Cindy Derkaz, says, "It's a real honour to have the Askew family choose the Shuswap Community Foundation to establish a permanent endowment fund. This is a true example of a family giving back to their community."

The Askews were also founding members of the Community Foundation when it started 10 years ago. Karen (Askew) Angove initiated this most recent contribution to the Foundation stating: "It's a great vehicle for keeping money in the community. Dad (Lloyd Askew) would have loved this." Dorothy Askew echoed this sentiment saying, "I couldn't think of a better place to put it. It's a gift that gives forever."

Clyde Tucker, current secretary of the Foundation, recalls a meeting with Lloyd when the new OUC campus was built in 1991. Clyde was Director of the Shuswap-Revelstoke Region of OUC at the time. Clyde says, "Lloyd (who had a long contact with the college, even taking economics classes there in the late 1970s) came around to my office, and asked if he might tour the new facility. I walked him around and enjoyed his always genial company for 20 minutes or so. He thanked me; reached into his pocket, and handed me a \$5,000 cheque for the scholarship fund. He was like that. The whole family, even the kids who live elsewhere now, are so much a part of the Shuswap."

FUTURE & PAST

While disbursements from this fund are in the hands of the Foundation, Dorothy has a wish for the future and that would be the establishment of a kidney dialysis unit at our local hospital. A close call with renal problems last year made her aware of the need for such a unit in the Shuswap. "If a dialysis unit came here it would be my focus," she says.

The Askew family has a proud tradition of community involvement. Karen says her Dad had a philosophy about the communities he was involved in. "He was in there for the long term," she states. In addition to his roles, at one time, as Rotary and Chamber-of-Commerce president, Lloyd was involved with founding the DIA (Downtown Improvement Association) along with Kelly Flynn. They had the foresight to plan for downtown re-vitalization so, when money came available from the provincial government, Salmon Arm was first in line. Karen feels this move to re-vitalize the downtown kept it strong and able to withstand the pressures other town centres felt from shopping malls.

Community remains a focus with the Askew family. Considerable donations have been made to the building of the upcoming Armstrong arena, plus the new Seniors Resource Centre and the Sunwave Centre in Salmon Arm to name just a few.



They contribute to the arts through such non-profit groups as the Shuswap Film Society, Shuswap District Arts Council, Shuswap Theatre and Haney Heritage Park.

The Family has also contributed to high school scholarships plus significant donations to Okanagan University College as well as donations to SAFE Houses in both Salmon Arm and Armstrong.

BRIEF HISTORY

Askews Foods, as it is known today, was started by R.B. "Dick" Askew in 1929. Under Dick's management, in the 1930's, the business grew to acquire other stores and an abattoir, overcame a destructive fire, adopted the name Salmon Arm Meat & Produce Company Ltd, bought out another meat business and established premises on Alexander Street.



Don Askew in early 1950s

After military service in WWII, Lloyd returned to Salmon Arm to marry Dorothy Brown in 1945. In 1948, Dick opened another store in Vernon which was managed by Lloyd. When Dick Askew died in 1951, Lloyd returned to Salmon Arm and assumed overall charge of the retail, abattoir and meat-packing operation. Business quarters on Alexander Street became cramped so in 1967 the firm took the bold step of opening Askew's Shop Easy in Shuswap Mall. Since that time, two more expansions have taken place. Askews Foods now boasts a 16,500 square foot store in Salmon Arm.

A branch store opened in Armstrong in 1975. Lloyd passed away in 1997 shortly before the opening of the Sicamous Askews store.

In 1988, Lloyd and Dorothy's youngest daughter, Karen Angove, left her career as a forestry ecologist to work with her Dad who was in failing health. She began as his administrative assistant and gradually took over duties as general manager.

(by Marg Shand)

(Photos courtesy the Askew Family)

YACOS Attend Regional Meeting



YACOS members Paige Hilland (l) & Amira Jung (centre) accept a cheque for \$3,000, from Barb Oates McMillan, BC Regional Coordinator, Community Foundations of Canada.

Amira Jung and Paige Hilland, two members of the YACOS, spent an April weekend in Victoria to attend the British Columbia Regional Meeting of Community Foundations of Canada.

Day one was spent at the Legislature Buildings. We participated in hands-on workshops with "The Kindness Crew" and David Sadler with "The Next Steps" Program. Next was a tour of the private and public areas of the Legislature buildings and lunch in the Member's Lounge. To conclude the youth portion of the day the girls attended a planning session for the "Canadian Volunteerism Initiative" where they helped plan events to promote youth volunteerism. Our day was completed with a dinner at the Government House hosted by the Lieutenant Governor.

Day two began with a plenary session on diversity and inclusion within Community Foun-

dations followed by break-out sessions to brainstorm with members of other foundations on the subject. In the afternoon the youth went on a short walk to visit the YWCA and talk about a Victoria YIP project to provide clothing to women trying to regain their life after being involved in prostitution. *(by Paige Hilland)*

YACOS (Youth Advisory Committee of Shuswap) is a committee of Shuswap Community Foundation. It is comprised of youth who meet regularly to plan and implement grant-making activities for youth projects and, with the help of the Salmon Arm Savings & Credit Union and the Vancouver Foundation, to develop youth endowment funds.

Grant to Help With Window Upgrade *Projects* Envirovent Makes Cleaner Air in Kiln

Shuswap District Arts Council, who manage the Arts Centre, received a project grant of \$2,000 from the Foundation through the General Fund in Memory of Eve Wright (an Arts Council Founder).

The money will go towards an energy-saving window upgrade in the Arts Centre building on the corner of Hudson and McLeod Street in downtown Salmon Arm.



An \$825 grant from the Shuswap Community Foundation (through the Gertrude & Ludwig Klein Memorial Fund and General in Memory of Sieg & Louise Silver) permitted the Salmon Arm Pottery Club to purchase and install an Envirovent to vent noxious fumes from the electric kiln.

The vent also allows a shorter firing time and improves the colours of some glazes such as yellows and reds.



\$5000 LEAD Grants Benefit Non-Profit Groups

Two Shuswap area non-profit organizations, Shuswap Day Care Society and Eagle Valley Community Support Society, each received \$2,500 in LEAD grants from Shuswap Community Foundation.

The Vancouver Foundation has once again made \$5,000 available to the Shuswap Community Foundation to give LEAD (Leadership, Engagement and Development) grants in the Shuswap.

Decisions were based on projects that promoted connectivity between people and community and enhanced self-sufficiency. The Foundation also looked at initiatives which developed leadership and involved networking between organizations.

The Shuswap Day Care Society will use its grant to offer a series of educational and hands-on workshops called "Building Blocks to Successful Parenting" to be offered to young parents at the Teen Daycare Centre. They have received a grant of \$1500 from Literacy BC to help

with this project. The Eagle Valley Community Support Society will use its grant for community development in Sicamous. They wish to create a community roundtable representing many interests in the community to find solutions to gaps, to deliver a variety of projects and to have a voice to many levels of government. They will also create a community development library.

LEAD grants were first used for Neighbourhood Projects in the Shuswap. Partnerships in funding with the Shuswap Community Foundation and the Districts of Salmon Arm and Sicamous made possible many small grants of up to \$500. These funds provided organizations with funds for enhancing their communities. From benches and signs, community gardens and playground equipment, to a pole for ospreys on the foreshore of Salmon Arm, these small projects were imaginative and had positive impacts in neighbourhoods all over the Shuswap.



Wendy Charlebois & Barb Hillocks

New Cupboards for Seniors' Resource Centre *Projects*

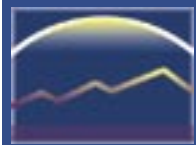
The Seniors Resource Centre, now located beside Fletcher Park in downtown Salmon Arm, has new kitchen cupboards and countertops thanks to a \$3,200 grant from the Foundation.

Money came from the Seniors Project Fund and the John and Ingrid Monk Endowment Fund.

The maple veneer cupboards, made by Mi-tec Millwork & Cabinetry in Salmon Arm, allows the Centre's staff and volunteers to conduct its "Day

Away" program twice a week for seniors to participate in cooking & baking, fun activities and to share a hot meal.

One of the co-ordinators, Wendy Charlebois, says they work closely with Community Care and Elderly Services as well as the local hospital, Bastion Place and Pioneer Lodge. The "Day Away" program encourages seniors to stay independent and become involved socially. It also offers respite to caregivers.



Memorials

Generous Donation in a Sister's Name



Mary Douhaniuk

August 7, 1939 - February 19, 2002

"She loved the north and the people there," recalls Bill Douhaniuk of his sister, Mary, who died at age 62 in Salmon Arm after spending a lifetime as a public health nurse in Canada's north country and other isolated areas working with indigenous people.

In her memory and with her blessing, Bill presented Shuswap Community Foundation with \$70,000 to establish a permanent endowment fund. He says that it was her wish that the income from the fund go towards: health equipment and training; programs involving social justice; support for arts and culture; and projects that contribute to the well being of residents of the Shuswap.

Mary was born at Killaly, Saskatchewan, graduating from the high school there before entering nurse's training at the Regina Grey Nuns Hospital. Her nursing career began in 1961 at St. Peter's Hospital in Melville,

Saskatchewan, and continued to include Public Health duties in Humboldt, La Ronge, Fort Smith, Port Simpson and Massett in the Queen Charlotte Islands.

In the mid-1970s illness and convalescence intervened and Mary took some time out. Later in the 1970s, she was posted at God's Lake, Manitoba, and other stints on reserves around the Calgary area and Deschambault Lake, Saskatchewan.

By the late 1970s, Mary was posted to Moosonee Outpost Hospital at James Bay and later to the Eastern and high arctic. By the late '70s and early '80s she had worked at some six Inuit communities. She finished her active career serving on native reserves in Spiritwood, Saskatchewan.

Bill says his sister also loved to travel and took time out over the years to cruise to New Zealand, Australia, the Philippines and Hong Kong and later took her mother and sister Betty to Victoria, BC. In 1987 she toured Austria, Germany and Hungary.

In 1999, a year after her retirement, she moved to Salmon Arm and enjoyed watching Bill with his new nursery in the Salmon River valley opposite Mt. Ida. Following her death, Bill named a series of small ponds he had setup to drain some of his land with the names of the places she had worked.

A travelogue of one woman's career: La Ronge, St. Francis, Great Bear, Fort Franklin, Sandy Bay, Deschambault Lake, God's Lake, Sarcee, Rankin Inlet, Frobisher, Albany River (James Bay), Igoolik, Woolaston, Southend Reindeer, Spiritwood, Chitek Lake, Witchekan Lake, Pelican Lake/Big River.

Bill says she also loved music and was a fan of Salmon Arm's Roots & Blues Festival.

Mary was interred in the Mariahilf Cemetery in Saskatchewan.

(Photos courtesy of Bill Douhaniuk)



Attention Arts Groups!

Did you know that any eligible arts group wishing to establish an endowment fund or add new money to an existing endowment fund with a Community Foundation in 2005-2006 may apply for matching dollars from the BC Governments \$25 million Arts Renaissance Fund? (Minimum \$10,000 - Maximum \$350,000)

Interested Arts Groups should invite a member of the Shuswap Community Foundation (directors' names & numbers are on page 2 of this report) to a meeting to discuss this amazing opportunity!



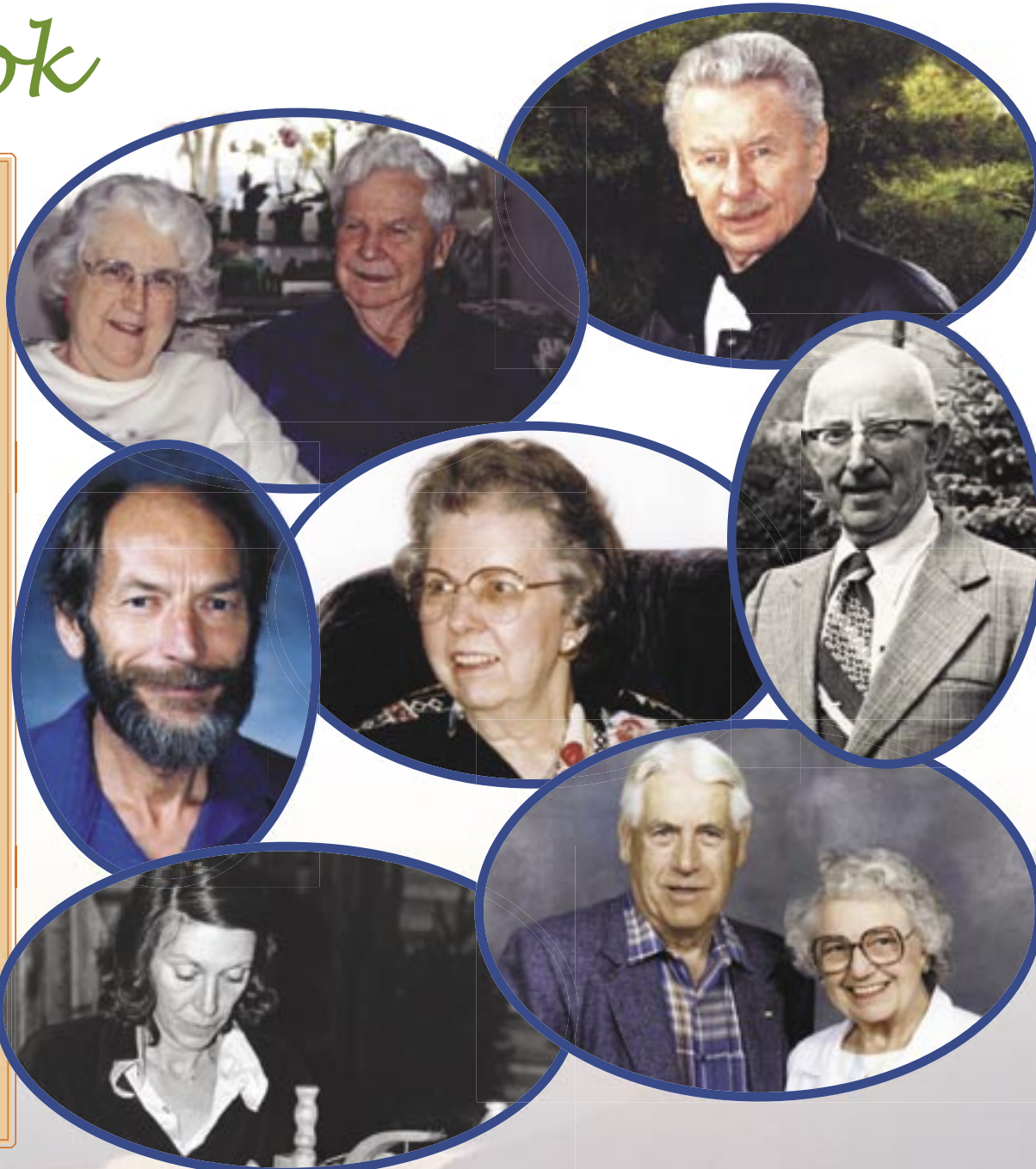
Memory Book

The Shuswap Community Foundation is committed to celebrating its founders and honouring in perpetuity all those in whose memory gifts have been made to the Foundation. The Shuswap Foundation will always publish in its records and reports the names of those memorialized; whenever appropriate, grants will be made in the name of the remembered person.

The Shuswap Foundation also maintains a "Memory Book," in both paper and electronic formats. Please look at the Memory Book on the Foundation web site (there is a link directly from the home page). If you are a Founder, or if you are able to contribute information and perhaps a photo, of a person not presently included in the Book, we would be most pleased to hear from you!

Imagine the Memory Book 20, 50, 100 years from now! There can be no more effective a lasting tribute than a memorial gift to the Shuswap Foundation. The Foundation is about "forever!"

Below are the names of Shuswap residents in whose names memorial tributes have been received.



In Memoriam

The Shuswap Foundation has received gifts in memory of the following people. The Foundation is committed to remembering these individuals, and whenever appropriate, celebrating their memory by making grants in their names.

Lloyd Askew
Marcel Asquin (Shuswap Art Gallery Ass'n)
Carol Berger
William Bews
Joan and Gordon Brooke
Marion and Jack Brooke
Morris ("Butch") Clifford
Dr. Barry Deakin
Betty-Jean Derkaz (Seniors Project Fund)
Margaret Doe
Sinclair Dunnett
Art Fraser
Guy Graham
Bob Griffiths
Dr. Eve Gulliford
Bob Hall
Eleanor Hall

Tomas Idzan
Peggy Kernaghan (Shuswap BCSPCA)
Dr. Bert Letham
Phyllis Lipsett
Pauline Lovegrove (Jennifer Phillips Fund)
Peggy Marsden
Dick Marshall
Donald Matthews
Ross McLeod
Howard Mobley (Wainwright-Mobley Fund)
Major Charles Wm. and Laura Mae Mobley
Ruby Mobley (Wainwright-Mobley Fund)
Jim Morris
Nathan Nash
Joyce O'Neill
Len O'Neill (Memorial Scholarship Fund)
Betty and Allan Paterson

Gordon Priestman (Social Justice)
Shayne Ready
Carson Everett Reynard (Jennifer Phillips Fund)
Janet Riley
Mary Romeril
Sieg and Louise Silver (Arts)
Donald Sinclair (Seniors Project Fund)
Gene Spence
Shirley Stewart
Geoff Suddaby
Brian Volker (Arts/Theatre)
JR Wainwright (Wainwright-Mobley Fund)
David Walters
Helena Wickett
Ralph Williams
Eve Wright (Literacy/Writers)



Foundation Founders

Wendy and Edward Apted
 The Askew Family
 Muriel and Frank Barnard
 Marcia and Jim Beckner
 Margaret and Sid Bedwell
 Sunni Berger and Gary Brooke
 Gayle and Jack Bowers
 Thomas Bowers (In Memoriam)
 The Braby Family
 Elsie and Tom Brighthouse
 Brooke, Jackson, Downs
 Wendy and Greg Browne
 Margery and Leon Carter
 Rita and Gerry Chu
 Nancy and George Clark
 Pauline ("Peg") Clarke
 Cindy Derkaz and Don Derby
 Nina Dickins
 Margaret and Ernie Doe
 Kari Dukeshire and Bernie Weare
 Ian Duncan
 Edith and Edward Fountain (In Memoriam)

Mary and Reid Fowler
 Joyce and John Henderson
 Lois and Harry Higgins
 Joan and Colin Hill
 Linda and Rick Hirtle
 RW and Annie Holliday (In Memoriam)
 The Hucul Family
 Bobbi and Joe Johnson
 Linda and Bill Laird
 The Letham Family
 The MacKenzie Family
 Peggy and Ed Marsden
 Joan and Denis Marshall
 Lil and Ken McKee
 Laura Middleton
 Ivy and Sam Miller (In Memoriam)
 Ingrid and John Monk
 Agnes and Morrie Morrison
 Doris and Norman Murray
 Jennie and Vic Nancollas (In Memoriam)
 Ray Newnes
 Elizabeth Louise Ozeroff

Michelle and Robert Papworth
 Betty and Allan Paterson
 Hjalmar Peterson
 Hubert Peterson
 Holly and Shane Ready
 The Ritchie Family
 Salmon Arm Observer
 Salmon Arm Savings and Credit Union
 Jim Scales
 Marian and Ralph Segreto
 Catherine and Joseph Shay
 Mavis and Dick Smith
 Barbara Strohan
 Bonnie and Graham Threlkeld
 Dr. Tess Trueman
 Shirley and Clyde Tucker
 Maud and Robert Turner (In Memoriam)
 The Ronald Turner Family
 The Ujimoto Family
 Lynne and Ian Wickett
 Eve and Chris Wright

A Nutritious Start to Life

Projects

Art Cart at Local Gallery



From left: Bev Routledge, Bill Phillips, Michelle Fuller and Lori Roy

A Foundation grant of \$2,000, through the Jennifer Phillips Memorial Fund, is going to help with pre and post-natal nutrition for women and their babies in the Shuswap.

Community Baby Food Kitchens is one of the Shuswap Family Resource Centre's many programs.

Bev Routledge, co-ordinator of the Healthiest Babies Possible (a pregnancy outreach program), says at

the present time (October/04) some 40 women clients in Salmon Arm, eight in Enderby and nine in Sicamous are learning to cook nutritious meals for themselves and their babies.

Assisted by Michelle Fuller and Lori Roy, these clients have come to take an active role in both food shopping and cooking for their families. The advantages are many because the women not only learn to shop and cook effectively, they also act as a support network for others. Routledge is pleased that some of the program's clients are now taking leadership roles.

The Foundation's grant is only part of the program's funding. The bulk comes from the Interior Health Authority and Health Canada. The number of women seeking help from this program is growing, according to Routledge. She estimates the program, which is funded for 50 participants, grows by nine women a month. At this rate, the number of women seeking assistance will expand to 100 by the end of the fiscal year in March 2005.



Children, ages four to 10 years, have a chance for some "hands on" art experiences thanks to a new program offered at the SAGA Public Art Gallery in Salmon Arm.

And there's now an "Art Cart" to hold materials for the program's activities.

Every Saturday afternoon, between 2 and 4 pm, young children accompanied by a parent come to the Gallery to try their little hands at "making art." The event is free and the Gallery supplies materials and ideas!

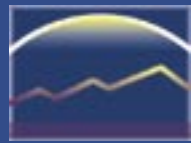
The Saturday afternoon children's art session is the brainchild of Gallery administrator Tracy Kutschker who initiated this during the Gallery's 10th Anniversary celebration in August, 2004. She wanted to make the gallery experience accessible for the next generation of Gallery supporters.

Tracy volunteers her time with the Saturday sessions teaching new ideas to the children before handing them material: glue, child-safe scissors, old magazines and donated scrap paper etc. from area businesses. Tracy adds that the ideas spring from the theme of the gallery's exhibition. She says, "for example, a fish mobile for the Gone Fishin' show, but we are also going to make use of holidays, too. After our collage self-portraits, we are doing valentines for Feb. 5 and 12."

The Shuswap Community Foundation (through the Wainwright-Mobley Memorial Fund) gave the project \$800 for an "Art Cart" which is now finished and ready to hold an Aladdin's Cave of art supplies. The Gallery commissioned local furniture-maker Brian Washington to make the Art Cart.



From left: Chelsea Vetter and her daughters Tirzah and Tamlin, Tracy Kutschker and daughter, Layla.



Foundation Donors 2004 - 2005

Individuals

Lake Apted
 Wendy & Edward Apted
 Dorothy Askew
 Sharie & Rick Biller
 Sunni Berger & Gary Brooke
 Laura & Douglas Burkitt
 Patricia Delmore-Ko
 Cindy Derkaz & Don Derby
 Gordon Dettelbach
 Nina Dickins
 Zoe Doebert
 William Douhaniuk
 Mary & Reid Fowler
 Ed Grainger

Robert Hall
 B.E. Harper
 Blanche Hartnett
 Dr. John & Joyce Henderson
 Lois & Harry Higgins
 Lawrence Huntley
 Barbara & Peter Kilby
 Gabriele Klein
 Eleanor Lawrence
 Tina & Chris Letham
 Barry Lipsett
 Lucy Lush
 Joyce & Charles MacDonald
 Muriel MacKenzie

Eric McCook
 Ken McKee
 Roberta McLeod
 Margery Meier
 Tom Milligan
 Ingrid & Douglas Monk
 Doris Murray
 Shannon O'Neill
 Dr. Lee & Jos Penner
 Regan Ready
 Sheri & Eric Reynard
 Jean Robertson
 Amber & John Robertson
 Robert Robertson

Ramona Rollins
 Irene & John Sansom
 Joan Scholinder
 Marian & Ralph Segreto
 Evelyn Sonne
 Bonnie & Graham Threlkeld
 Elsie Tweeddale
 Rosemarie Vennard
 Michael Wagner
 Ramona Wainwright
 James Wardrop
 Chris Wright

Organizations

District of Salmon Arm
 Salmon Arm College Scholarship Trust
 Salmon Arm Savings and Credit Union

Shuswap Art Gallery Association
 Shuswap Hospice Society
 Vancouver Foundation

The Foundation also acknowledges the generous support of those corporate sponsors whose logos appear on the back page of this report.

Climate Control Preserves Archives

Projects

Shakespeare in Sicamous



Deborah Chapman - Curator/Archivist at Haney Heritage Park

Haney Heritage Park curator/archivist Deborah Chapman, sets up a Hygrothermograph for use in one of the park's newest buildings.

The instrument was purchased through a \$1,000 grant from "Donations in Memory of Lloyd Askew Fund" and will be used in the Beemish Building to monitor moisture and temperature and thus protect archives.

The Beemish Building, with its Cobweb Corners exhibit, will house over 6,000

records (mainly 78 rpm) and over 900 recording cylinders from the personal collection of Sam Beemish who once hosted a radio broadcast out of Kamloops which was heard in the Kamloops/Shuswap region for many years.

The Hygrothermograph, although a state-of-the-art instrument, employs defatted human hair to measure changes in moisture. Chapman says human hair expands and contracts with moisture and it is one of the finest mediums that reacts to changes in moisture.

The Beemish Building has been completed at Haney Heritage Park. When visiting the Beemish Building, visitors will see a reconstruction of a recording studio.

The Sicamous Visual & Performing Arts Society donned medieval dress for their production of William Shakespeare's "A Midsummer Night's Dream" July 14 to 17, 2005 in Finlayson Park, Sicamous.

The Society received \$500 from the Enid Finn Memorial Fund to assist with this production.

Directed by Aileen Gentles, the play includes large cast of actors from Sicamous, Enderby and Salmon Arm. Since the production was in medieval costumes, the Society invited the Vernon chapter of the Society for Creative Anachronism to perform pre-show demonstrations of sword-fighting, dancing and music.

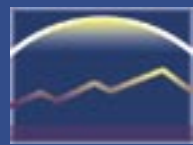
Gentles was enthusiastic about her cast which included some children playing fairies. "Not your run-of-the-mill Disney sweetie pie fairies," she comments. Gentles herself took a role as one of the "rude mechanicals."

A special guest, Linda Khandro, came up from Seattle for the production to perform incidental music and sound effects, especially for the forest scenes. Khandro is a musician who designs and plays music for hospices, using all kinds of percussion, gongs, drums and two kinds of harp.



A scene from a Midsummer Night's Dream

Photo by Jack Taylor



Corporate Sponsors

The Shuswap Community Foundation recognizes the generous support of our corporate sponsors. Their contribution allows the Foundation to maximize the amount of money granted to enhance our community.



Dominion Securities

WAYNE M. LETOURNEAU*
NOTARY PUBLIC

*A Professional Notary Corporation



Salmon Arm Savings
and
CREDIT UNION



Salmon Arm

SALMON ARM
OBSERVER

BROOKE JACKSON DOWNS
LAWYERS

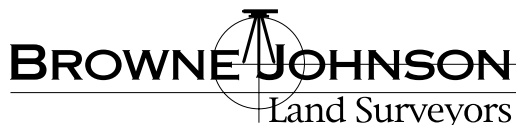
Robin Jackson • Gary M. Brooke • James N. Downs • Janice H. Crerar • Elizabeth Sadorsky



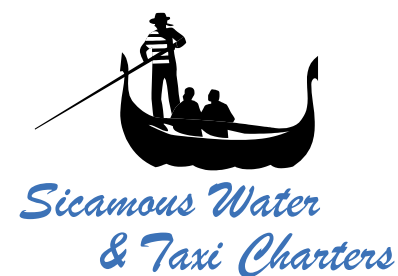
SIVERTZ, KIEHLBAUCH, ZACHERNUK
320-351 Hudson Ave. NE
"full service law firm since 1912"



Shuswap Optometric Centre
Family Optometrist
Dr. J. Beckner Dr. R. Allaway



Mud, Sweat & Tears
STONEWARE AND PORCELAIN POTTERY



Shuswap Community Foundation

Box 624, Salmon Arm, BC V1E 4N7 • Email: info@shuswapfoundation.ca

www.shuswapfoundation.ca